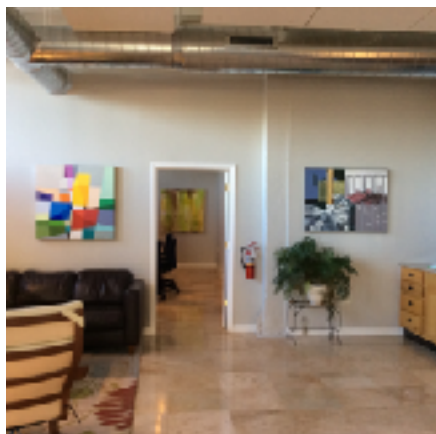
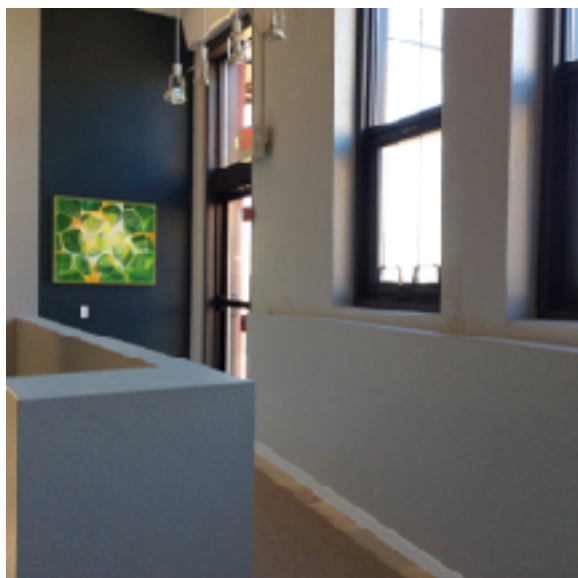




**#1 Alby Street
Alton, IL 62002**

2,000 square feet with private offices and conference room; spacious reception area, travertine floors, kitchenette, elegant airy interior, river views, ample adjacent parking. Ideal professional services or retail environment. Located in the historic Lucas Pfeifferberger-designed industrial building converted to residential lofts above and high end ground floor commercial spaces.



Just 20 miles north of Lambert St Louis International Airport and downtown St Louis. Minutes from the Clark Bridge, US 67 and the heart of downtown Alton. \$1,800 per month. For more information, please call 618. 973 3387

